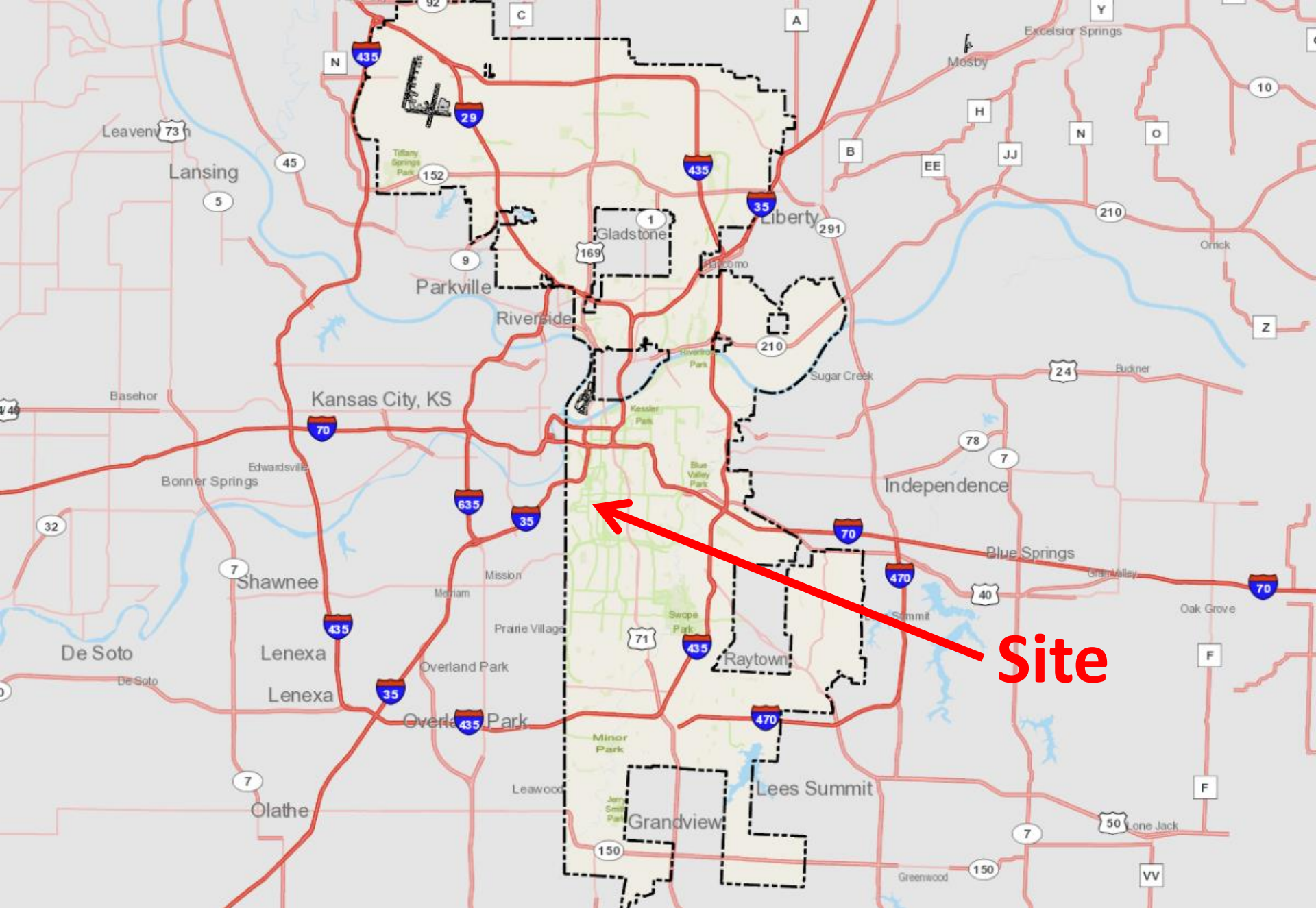


Ord No.

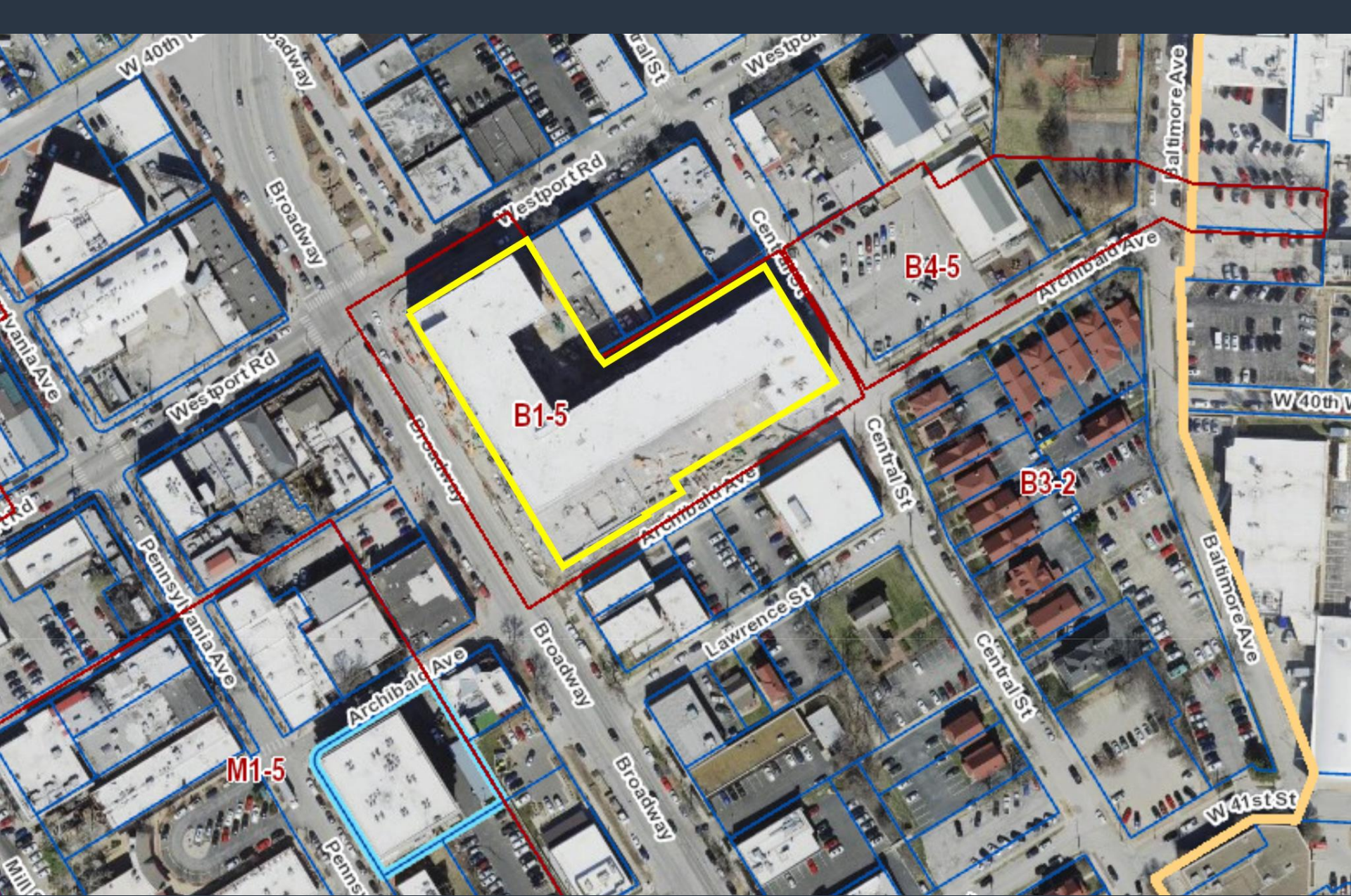
Case No. CD-CPC-2021-00166

The Westley





Site



Case No. CD-CPC-2021-00166



View looking east at Westport Rd and Broadway

 Case No. CD-CPC-2021-00166

Last Approved Submittal	
CD-AA-2021-00094 Approved 07.02.2021 (v4)	
#	SF

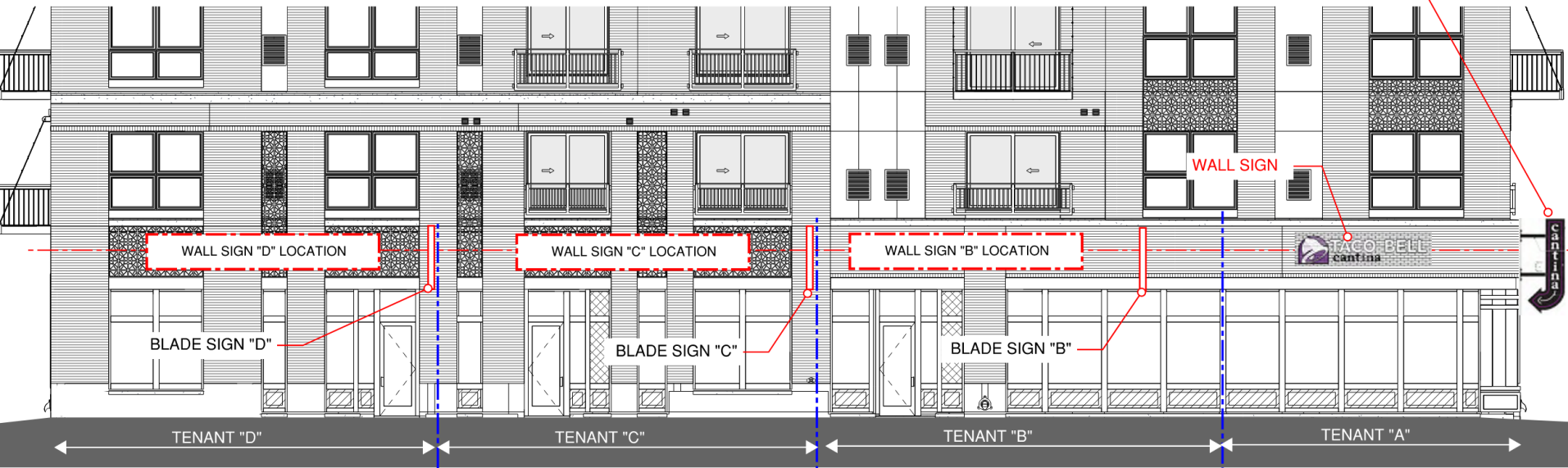
Proposed Amendment		
Proposed Signage (v7)		
#	SF	

Facade	Space	PDF Page	Approved	Descript	Approved	Proposed	Descript	Proposed
North	A	2	1	Wall	30	2	Blade & Wall	50.81
(Westport Rd.)	B	2	2	Blade	33	2	Blade & Wall	52.7
	C	2	1	Blade	21	2	Blade & Wall	49.6
	D	2	1	Blade	21	2	Blade & Wall	50.37
West Façade	A	3	3	Blade & 2 Wall	49	1	Wall	12.28
(Broadway Blvd.)	Icon	3	1	Top Blade	12.25	1	Soffit	3.4
	ID	N/A	1	Corner wall	41.4	1	Top Blade	12.25
	Entryway	N/A	1	Lobby Entry Wall	26.35	1	Corner Wall	41.4
West (South End)	E	4	1	Wall	25	1	Lobby Entry Wall	26.35
(Broadway Blvd.)		4	1	Blade	12	2	Blade & Wall	96.1
Archibald St.	E	5	0	Wall	0	1	Wall	162.75
Total:			13		271	16		558.01

SUMMARY	
Additional Signs Requested:	3
Total Increase in SF:	287.01
% Increase SF:	51%

12 S.F.

CORNER BLADE SIGN "A"



TENANT "D"

TENANT "C"

TENANT "B"

TENANT "A"

TENANT "D" WALL AREA:
 15'-6" X 32'-6" = 503.75 S.F. / 10% = 50.37 SF.
 WALL & PROJECTING BLADE SIGNS OPTIONS

TENANT "C" WALL AREA
 15'-6" X 32'-0" = 496 S.F. / 10% = 49.6 SF.
 WALL & PROJECTING BLADE SIGNS OPTIONS

TENANT "B" WALL AREA
 15'-6" X 34'-0" = 527 S.F. / 10% = 52.7 SF.
 WALL & PROJECTING BLADE SIGNS OPTIONS

TENANT "A-NORTH" WALL AREA
 THIS SIGNAGE FOR TACO BELL CANTINA HAS BEEN
 CITY APPROVED PER CD-AA-2-21-00094

PROJECTING BLADE SIGNS LIMITED TO 12 SF OF
 THIS OVERALL TOTAL 50.37 SF TOTAL

PROJECTING BLADE SIGNS LIMITED TO 12 SF OF
 THIS OVERALL TOTAL 49.6 SF TOTAL

PROJECTING BLADE SIGNS LIMITED TO 12 SF OF
 THIS OVERALL TOTAL 52.7 SF TOTAL

TENANT "A-WEST" WALL AREA
SIGNAGE FOR TACO BELL CANTINA HAS BEEN CITY APPROVED PER CD-AA-2-21-00094



THE WESTLEY ON BROADWAY
4111 Broadway Blvd.

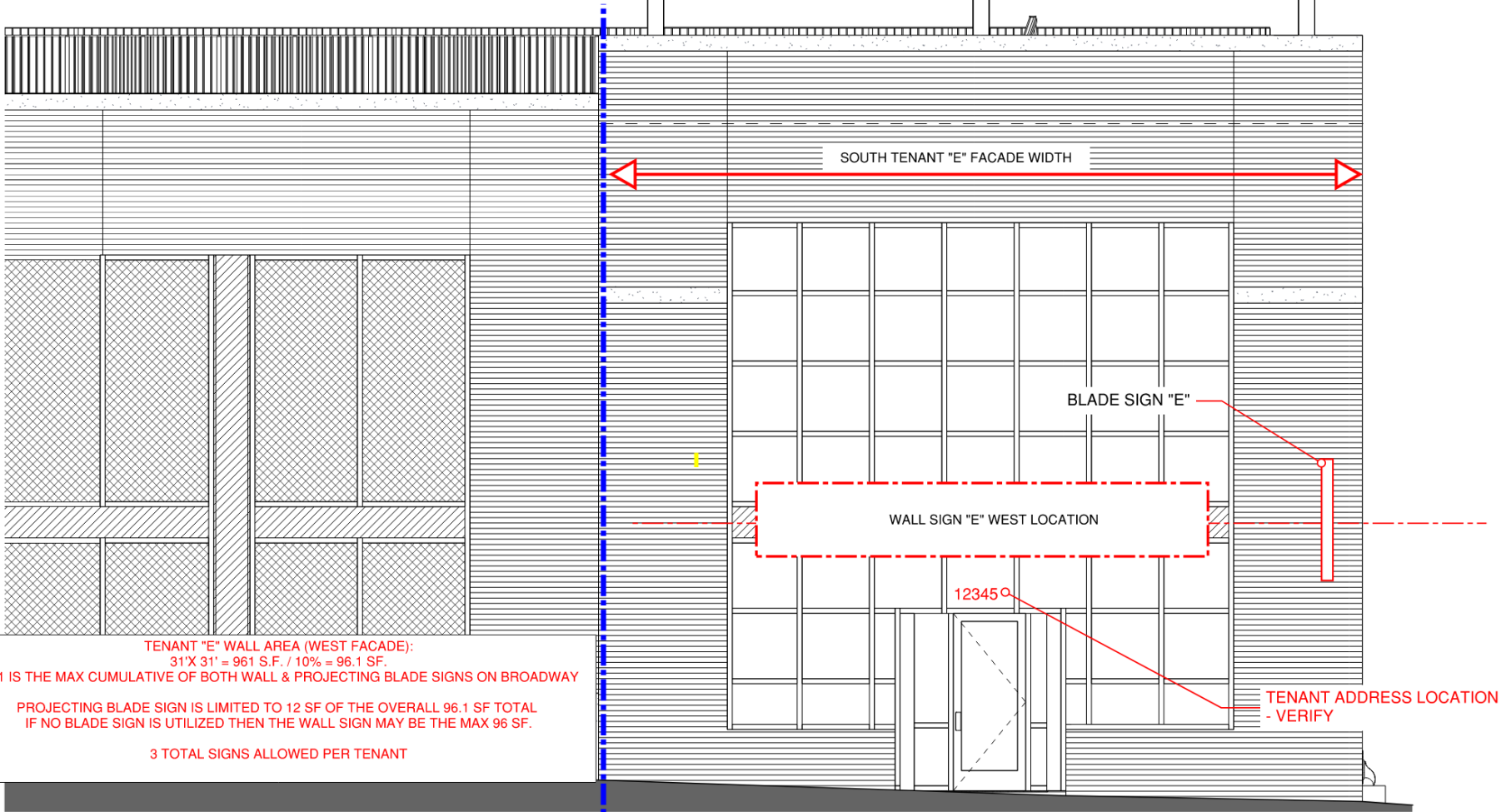
West Elevation - North End
VERSION 6_08/21/2021

PROJECT LOCATION: 4111 Broadway Blvd.
Kansas City, MO 64111
PROJECT NUMBER: 31206100
PROJECT UNIT NAME: AS5

Case No. CD-CPC-2021-00166

In reference to Kansas City MO Ordinance 88-445-07-Signs

Three signs per tenant are allowed per the ordinance.
We are requesting a total of three signs for Tenant E, two on the Broadway/West facade and one on the Archibald/South facade (Next page).
Total area of all signs is limited to 10% of the tenants exterior facade wall area.



TENANT "E" WALL AREA (WEST FACADE):
31' X 31' = 961 S.F. / 10% = 96.1 SF.

96.1 IS THE MAX CUMULATIVE OF BOTH WALL & PROJECTING BLADE SIGNS ON BROADWAY

PROJECTING BLADE SIGN IS LIMITED TO 12 SF OF THE OVERALL 96.1 SF TOTAL
IF NO BLADE SIGN IS UTILIZED THEN THE WALL SIGN MAY BE THE MAX 96 SF.

3 TOTAL SIGNS ALLOWED PER TENANT



THE WESTLEY ON BROADWAY

4111 Broadway Blvd.
Kansas City, MO 64111

West Elevation - South End

VERSION 6_08/21/2021

PROJECT LOCATION: 4111 Broadway Blvd.
Kansas City, MO 64111
PROJECT NUMBER: 31206100
PROJECT UNIT NAME: AS6

52'-6" SOUTH TENANT "E" FACADE WIDTH

WALL SIGN "E" SOUTH LOCATION

TENANT "E" WALL AREA (SOUTH FACADE):
52.5' X 31' = 1627.5 S.F. / 10% = 162.75 SF.

OPTION FOR ONE WALL SIGN ON ARCHIBALD

3 TOTAL SIGNS ALLOWED PER TENANT

US

THE WESTLEY ON BROADWAY
4111 Broadway Blvd.

South Elevation
VERSION 6_08/21//2021

PROJECT LOCATION: 4111 Broadway Blvd.
Kansas City, MO 64111
PROJECT NUMBER: 31206100
PROJECT UNIT NAME: AS7

 Case No. CD-CPC-2021-00166

CPC Recommendations:

Case No. CD-CPC-2021-00166

Approval with conditions

1. That Ordinance No. 170407, including all conditions provided therein, shall remain in full force and effect.