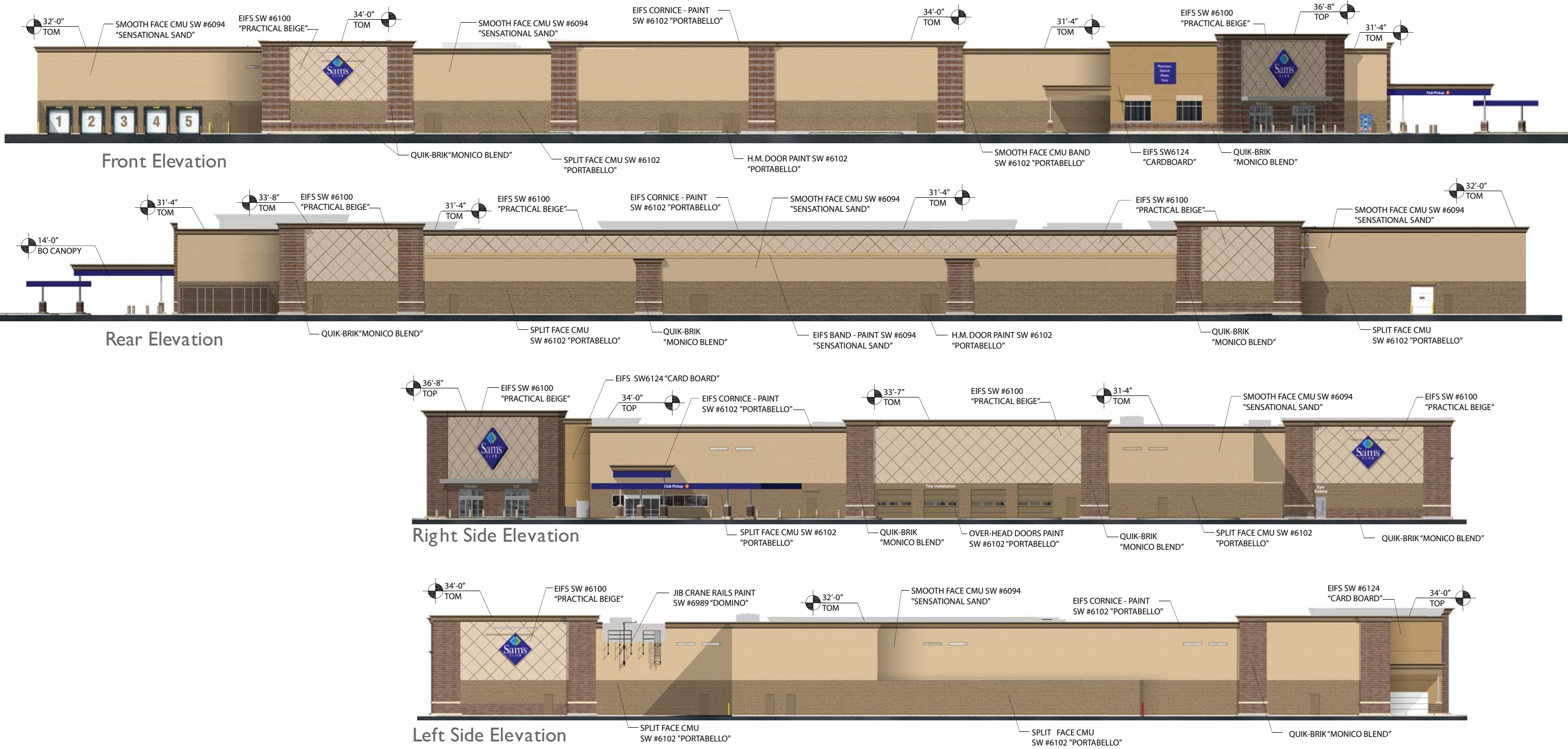


Elevations



Kansas City (NW), MO #6248

May 24, 2016

Perspectives



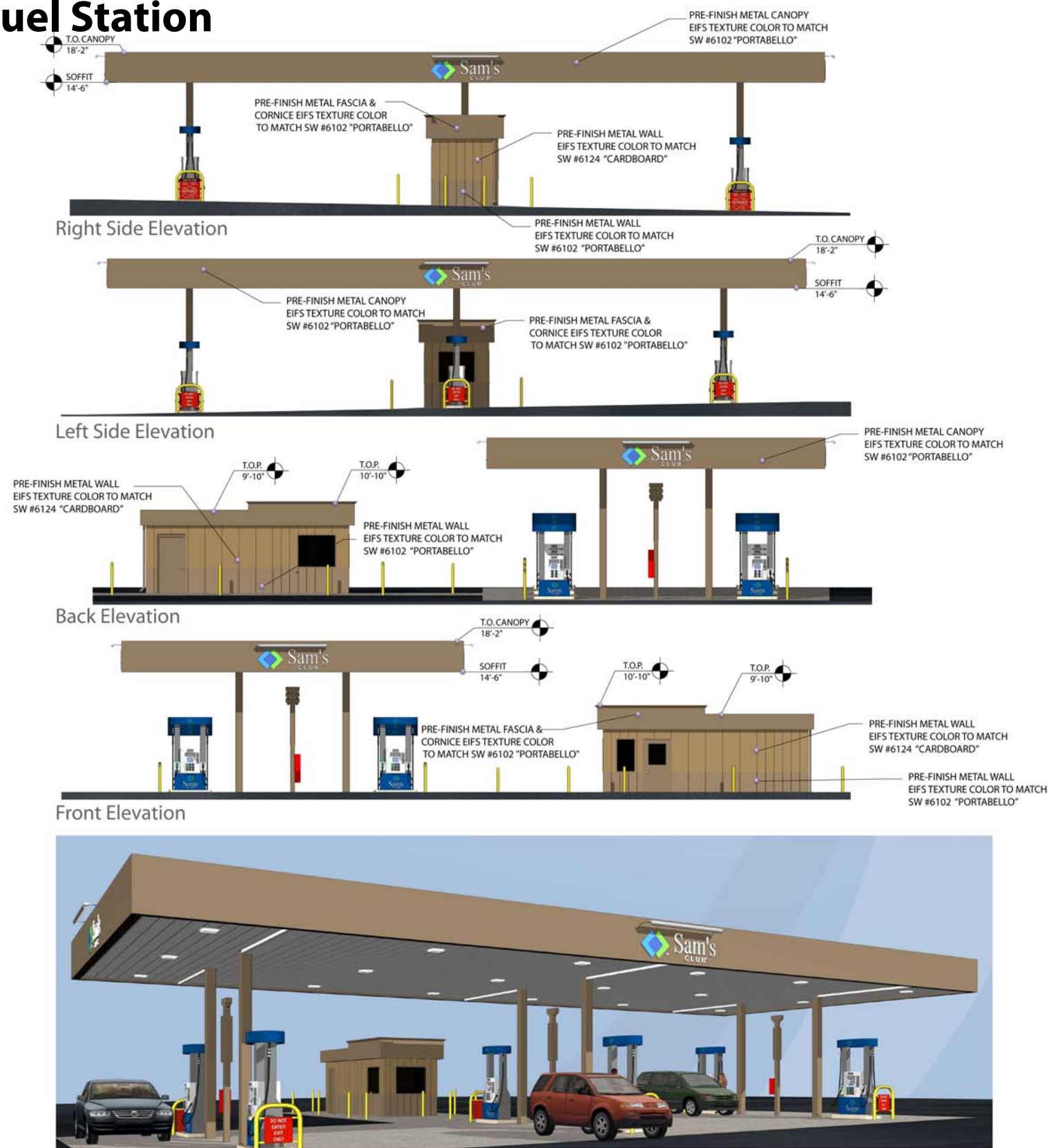
Kansas City (NW), MO #6248

May 24, 2016

2

Shade
L.
O'Quinn
Architect

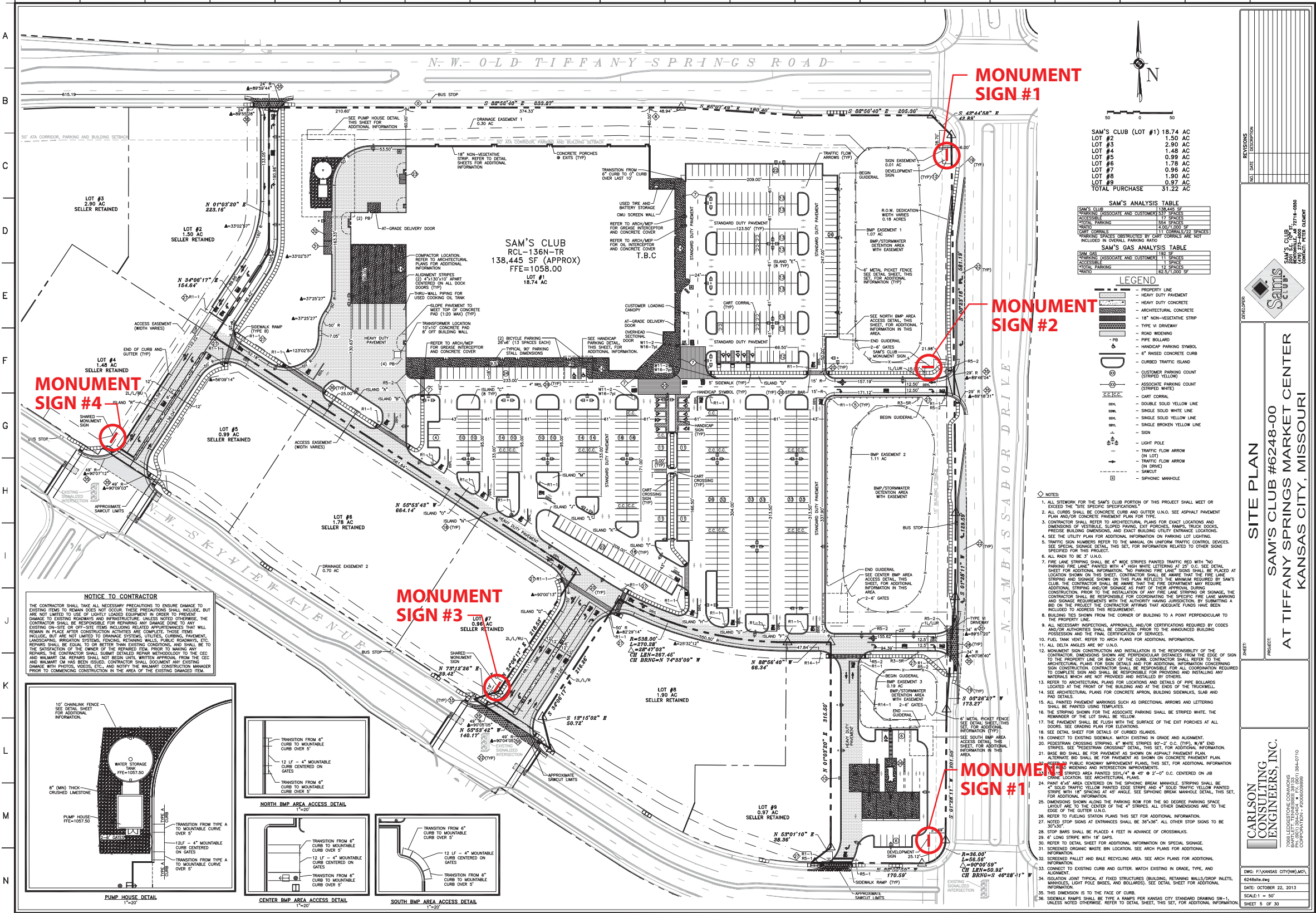
Fuel Station



Kansas City (NW), MO #6248

May 24, 2016

Site Sign Locations



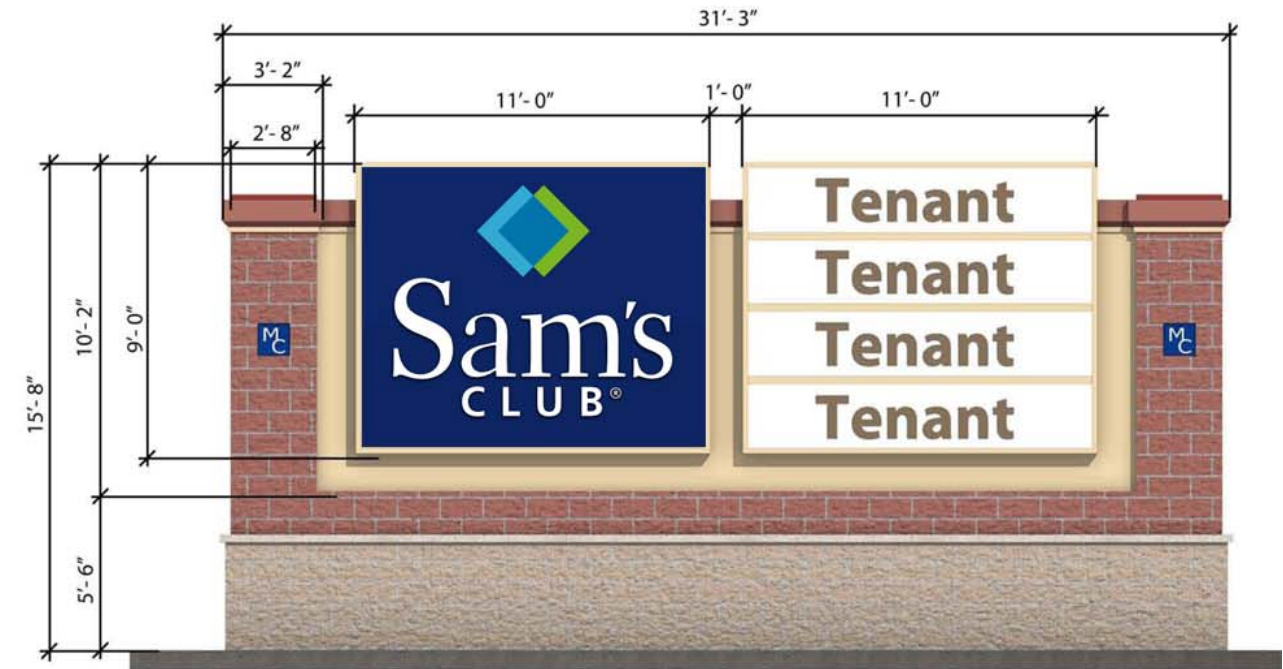
Kansas City (NW), MO #6248

May 24, 2016

DESIGN REPRESENTATION ONLY - NOT FOR CONSTRUCTION The building images shown are a representation of the current design intent only. The building images may not reflect variations in color, tone, hue, tint, shading, ambient light intensity, materials, texture, contrast, font style, construction variations required by building codes or inspectors, materials or final design detailing.



NOTE: ALL STRUCTURES ARE DESIGNED AND BUILT BY DEVELOPER. SAM'S CLUB SIGNAGE PANELS TO BE ADDED TO THE DEVELOPMENT SIGNS PER DEVELOPMENT AGREEMENT.



OVERSIZED MONUMENT SIGN #2

AREA: 192 SF



OVERSIZED MONUMENT SIGN #3

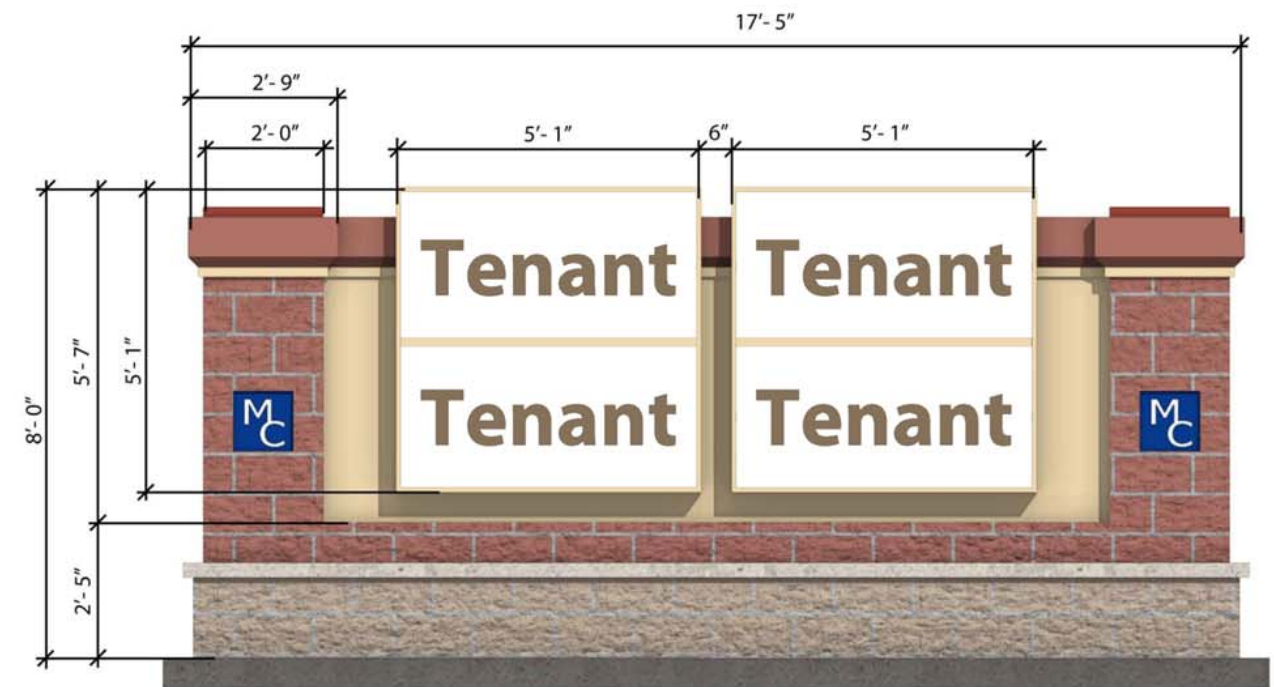
AREA (SAM'S): 99 SF
AREA (TENANTS): 99 SF



Kansas City (NW), MO #6248

May 24, 2016

NOTE: ALL STRUCTURES ARE DESIGNED AND BUILT BY DEVELOPER. SAM'S CLUB SIGNAGE PANELS TO BE ADDED TO THE DEVELOPMENT SIGNS PER DEVELOPMENT AGREEMENT.



MONUMENT SIGN #1 **TYP OF 3 (ONE IS LOCATED OFF SITE PLAN)**



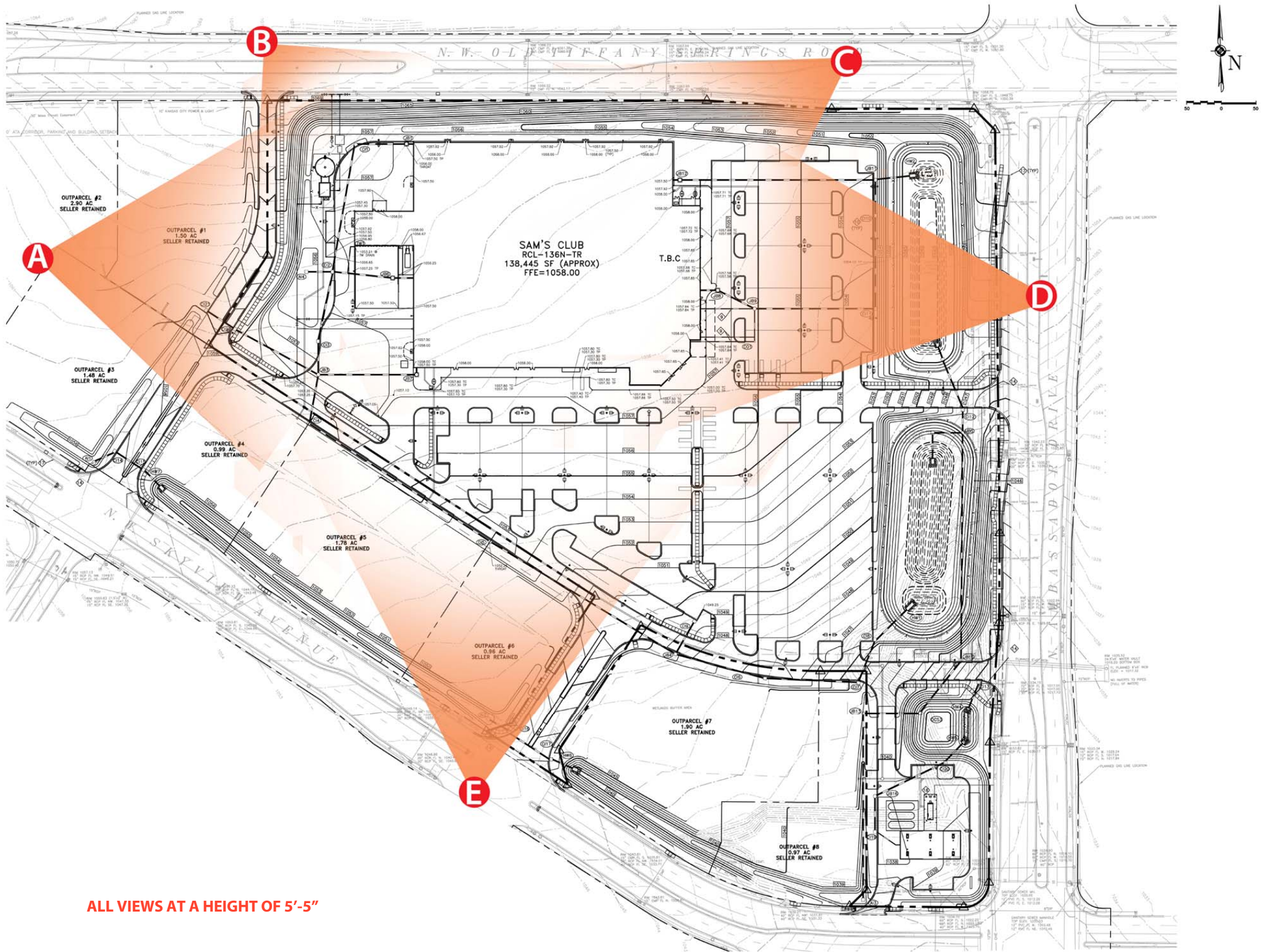
MONUMENT SIGN #4



Kansas City (NW), MO #6248

May 24, 2016

Map for line of sight locations to show RTU's cannot be seen.



ALL VIEWS AT A HEIGHT OF 5'-5"



Kansas City (NW), MO #6248

May 24, 2016



Point of View A



Point of View B



Kansas City (NW), MO #6248

May 24, 2016

8





Point of View C



Point of View D



Point of View E



Kansas City (NW), MO #6248

May 24, 2016