



**KANSAS CITY
MISSOURI**

Ordinance #250343 CD-CPC-2024-00194 Rezoning

CD-CPC-2024-00195 Development Plan - Residential

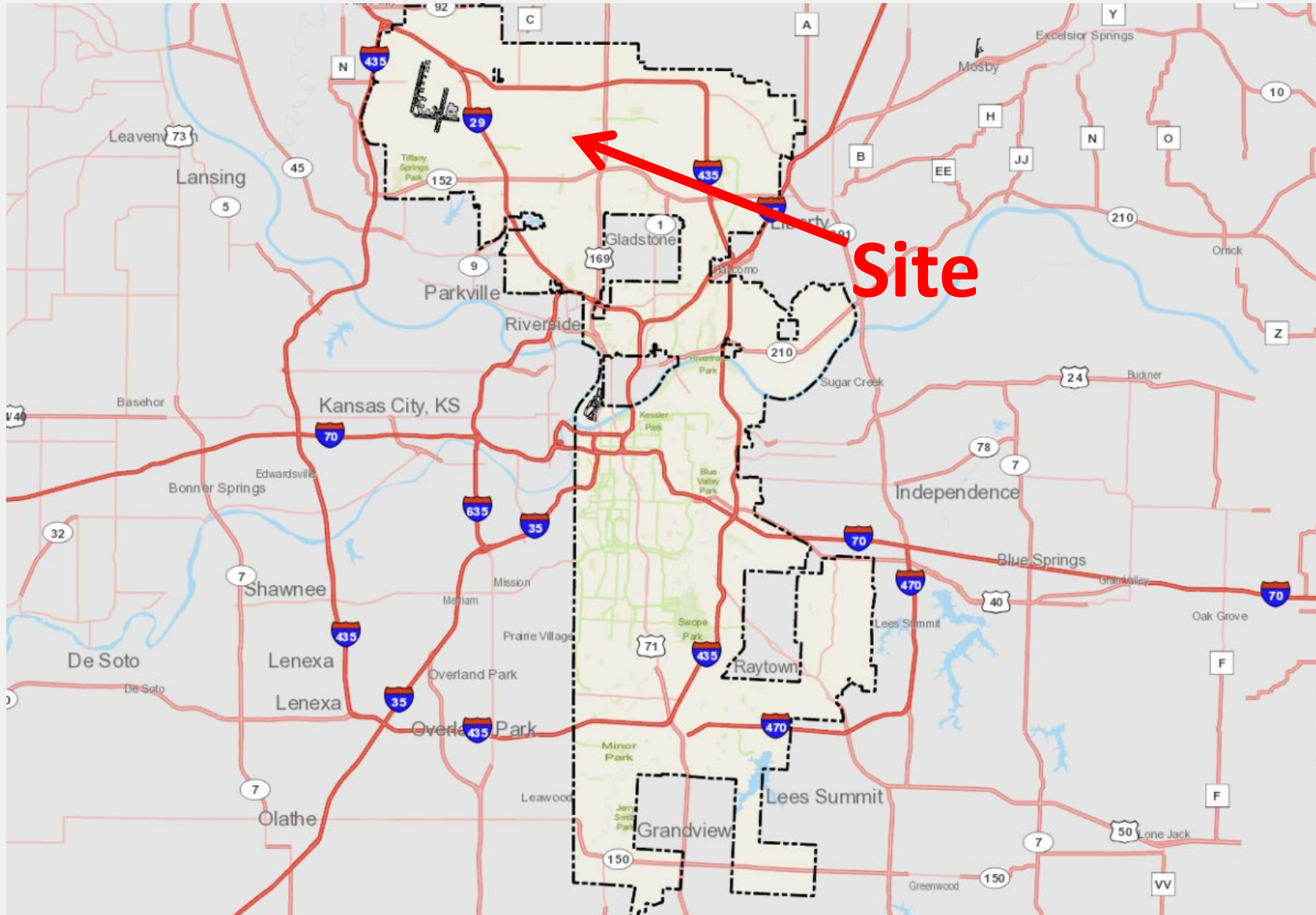
Moss Farm

10700 N Platte Purchase Drive

April 29, 2025

Neighborhood Planning and Development Committee







View looking south on Northwest 108th Street



View looking west on North Platte Purchase Drive

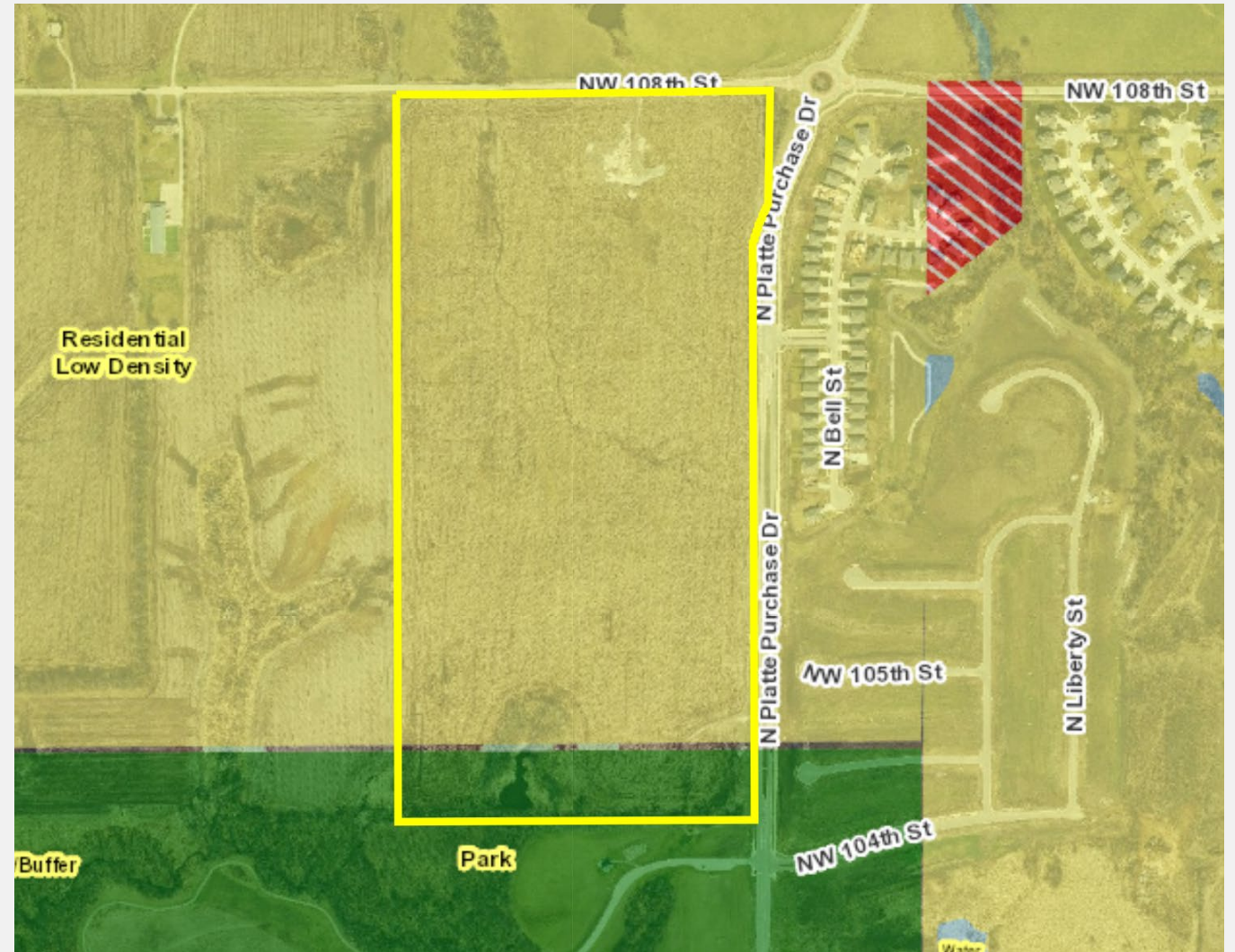
Future Land Use

Future Land Use:

Residential Low Density

KCIA Area Plan Recommendation:

R-7.5 & R-6



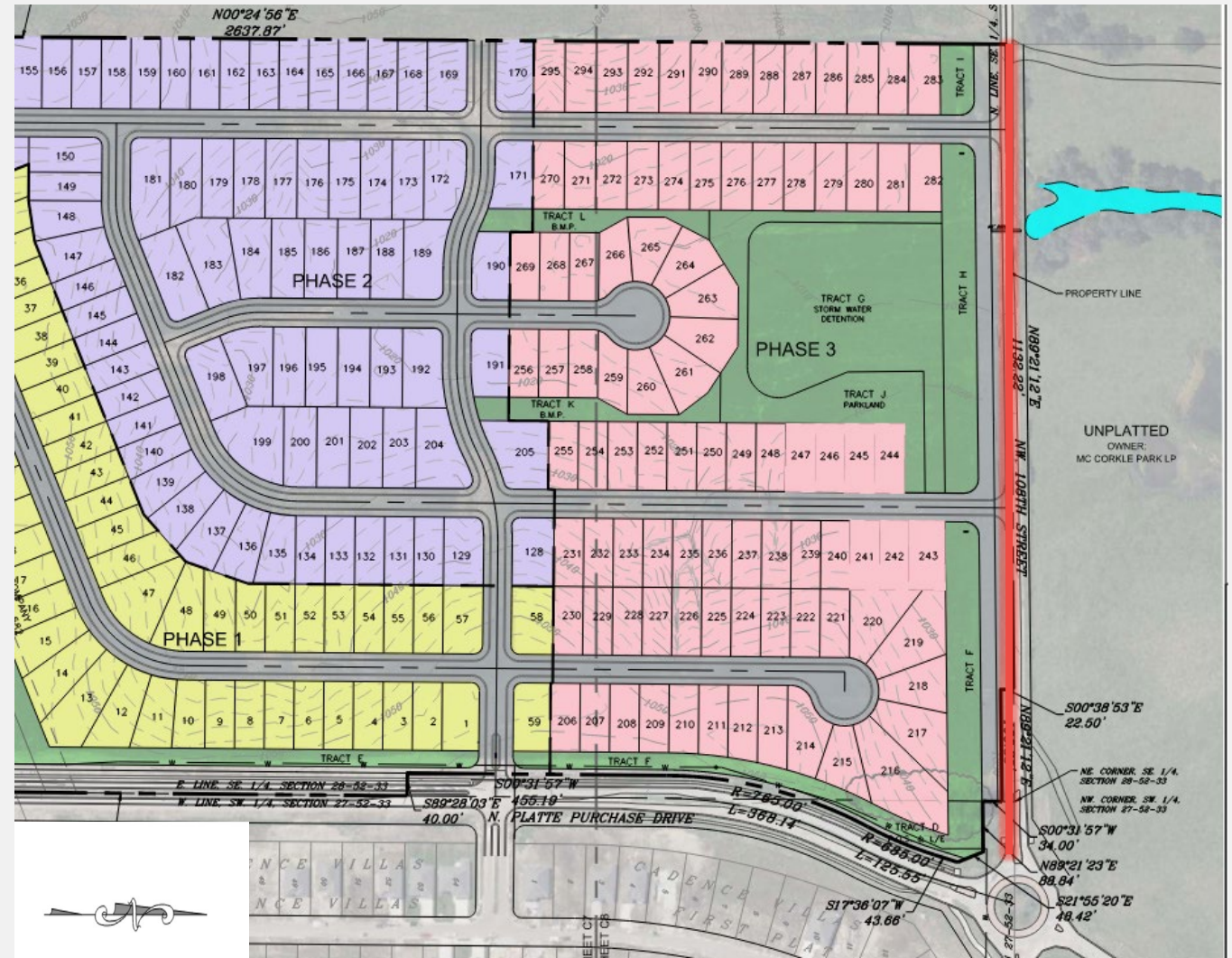
Site Plan

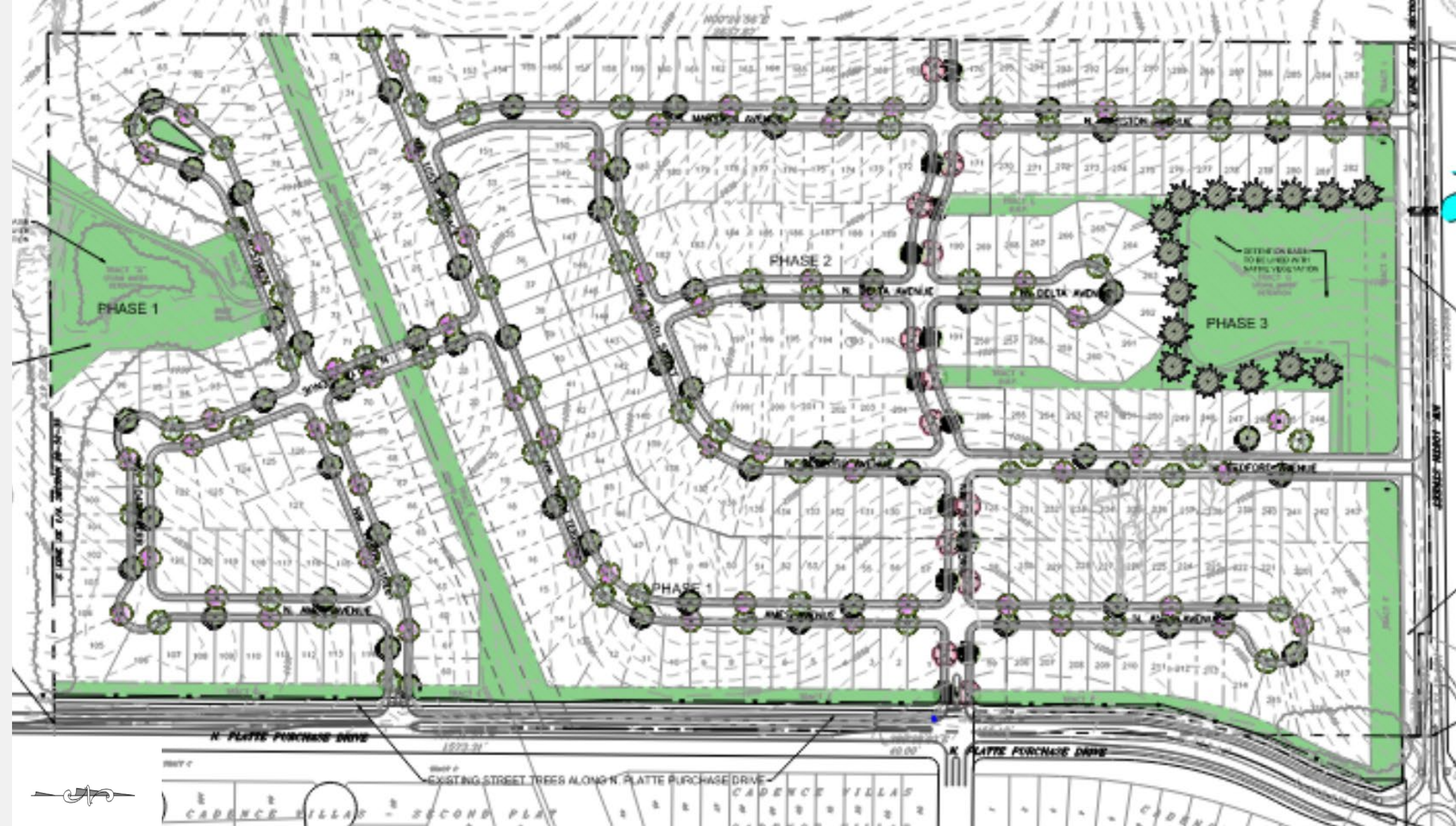
- 77 acres
- 295 lots (Detached Homes)
- Extension and creation of multiple streets
- Rezoning from R-7.5 to R-6



88-323 – Boulevard and Parkway Standards

- Northwest 108th Street is an established parkway
- 30' rear yard setback
- 60' "No build" landscape buffer provided
- Northeast Shoal Creek Parkway to be extended





CPC & Staff Recommendation

CD-CPC-2024-00194
Rezoning

Approval

CD-CPC-2024-00195
Development Plan - Residential

Approval with Conditions