



**KANSAS CITY
MISSOURI**

Ordinance #250602

Authorizing Amendment No. 3 to a design professional services agreement with WSP, Inc. in the amount of \$695,794.23 for Grand Boulevard Bridge Bike/Pedestrian Accommodations project for a total contract amount of \$1,797,249.16; and recognizing this ordinance as having an accelerated effective date.



Ordinance #250603

Approving the recommendations of Arterial Street Impact Fee District G Committee; appropriating \$575,000.00 from the Unappropriated Fund Balance of the Arterial Street Impact Fee Fund to Holmes Road - 137th Street to Blue Ridge Boulevard Project in the Arterial Street Impact Fee Fund; and recognizing this ordinance as having an accelerated effective date.



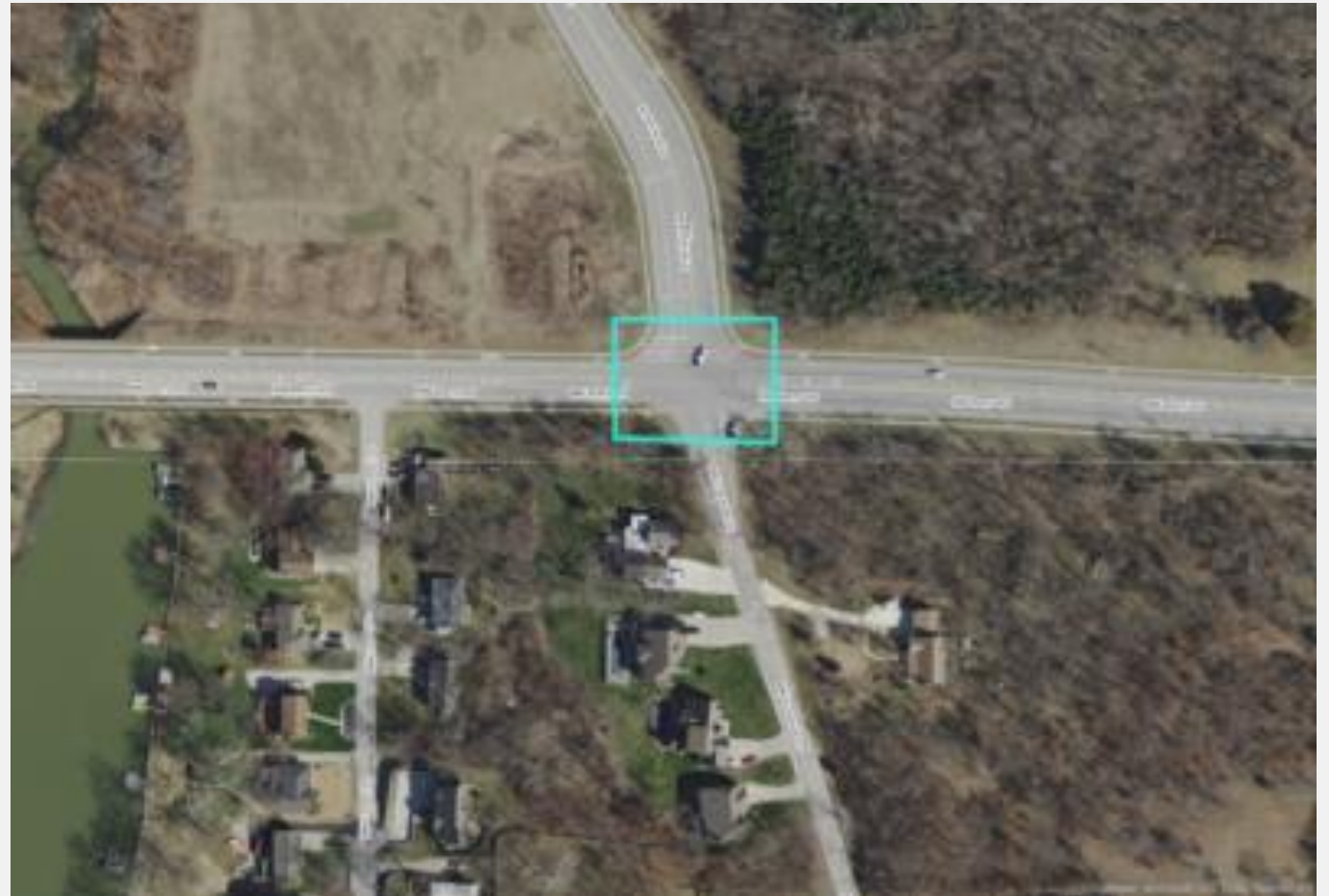
Ordinance #250604

Authorizing the Director of Public Works to execute Amendment No. 1 to the 2025-26 Cooperative Agreement with Bike Share KC in the amount of \$166,040.00 for a total contract amount of \$581,000.00.



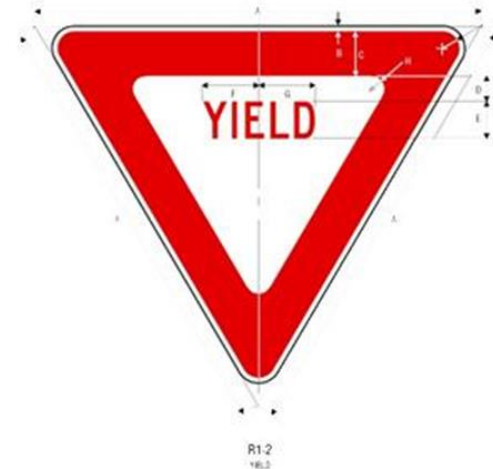
Ordinance #250607

Approving the recommendations of Arterial Street Impact Fee District E Committee; appropriating \$600,000.00 from the Unappropriated Fund Balance of the Arterial Street Impact Fee District E - Line Creek Fund to Northwest Barry Road & North Amity Avenue - Traffic Signal Project; and recognizing this ordinance as having an accelerated effective date.



Ordinance #250608

Approving various Traffic Regulations in compliance with Chapter 70 of the Code of Ordinances.



A	B	C	D	E	F	G	H	J
18	3/8	2	1	1 1/2	2 3/8	2 3/8	2 3/8	1 1/2
24	3/8	3	1 1/2	2 1/2	3 1/2	3 1/2	3 1/2	1 1/2
30	5/8	4	1 1/2	2 1/2	3 1/2	3 1/2	3 1/2	1 1/2
36	5/8	5	2	3 1/2	4 1/2	4 1/2	4 1/2	2
48	1	6	2 1/2	4 1/2	6 1/2	6 1/2	6 1/2	2
60	1 1/2	8	3 1/2	5 1/2	7 1/2	7 1/2	7 1/2	4

COLORS: LEGEND: -- RED (RETROREFL) -- WHITE (RETROREFL)
BACKGROUND: WHITE (RETROREFL)

1-2



LEGEND: GREEN (RETROREFL) BACKGROUND: WHITE (RETROREFL)

LEGEND: RED (RETROREFL) BACKGROUND: WHITE (RETROREFL)

LEGEND: RED (RETROREFL) BACKGROUND: WHITE (RETROREFL)

LEGEND: GREEN (RETROREFL) WHITE SYMBOL ON BLUE (RETROREFL) BACKGROUND: WHITE (RETROREFL)

04/14/06

1-92

**Reduce spacing 50%
**See page 6-31
***See page 6-2 for arrow design