



**KANSAS CITY
MISSOURI**

City Planning and Development

1

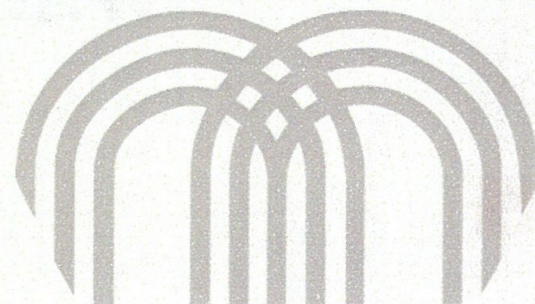
Ord. 250997

CD-CPC-2025-00141

Text Amendments: Dispensary Hours of Operation

January 27, 2026

NPD Committee



Section 88-354 Marijuana Facilities

88-354-01	Applicability
88-354-02	Standards & Conditions for All Marijuana Facilities
88-354-03	Measurements
88-354-04	Hours of Operation
88-354-05	Storage
88-354-06	External Impacts



250997: Text Amendments

Section 88-354 Marijuana Facilities

88-354-01	Applicability
88-354-02	Standards & Conditions for All Marijuana Facilities
88-354-03	Measurements
88-354-04	Hours of Operation
88-354-05	Storage
88-354-06	External Impacts

New: 88-354-04-B - Twenty-Four Hour Operations

Comprehensive and Medical Marijuana dispensary facilities that are located more than 1000 feet from a residential zoning district may operate twenty-four hours per day subject to approval of a Special Use Permit. No special use permit for twenty-four hour operations may be approved for a period longer than 5 years duration. Extensions of the approved time period may be approved through a new special use application and hearing.

New: 88-354-04-B - Twenty-Four Hour Operations

- More than 1000 feet from a residential zoning district
- Subject to approval of a Special Use Permit
- SUP limited to 5 years duration
- Extensions approved through a new special use application and hearing

CPC Recommendation: 88-354-04-B - Twenty-Four Hour Operations

Comprehensive and Medical Marijuana dispensary facilities that comply with all distance requirements of Section 88-354-02 and are located more than 1000 feet from a residential zoning district may operate twenty-four hours per day subject to approval of a Special Use Permit. No special use permit for twenty-four hour operations may be approved for a period longer than 5 years duration. Extensions of the approved time period may be approved through a new special use application and hearing.



CPC Recommendation: 88-354-04-B - Twenty-Four Hour Operations

- More than 1,000 feet from a residential zoning district
- More than 1,000 ft from schools, 300 ft from churches/daycares, & 2,000 ft from other dispensaries
- Subject to approval of a Special Use Permit
- SUP limited to 5 years duration
- Extensions approved through a new special use application and hearing



New: 88-354-03 - Measurements

Adds "residential zoning district" to methods of measurement

Measurements shall be made along the shortest path that can be lawfully traveled by foot

Kansas City Dispensaries

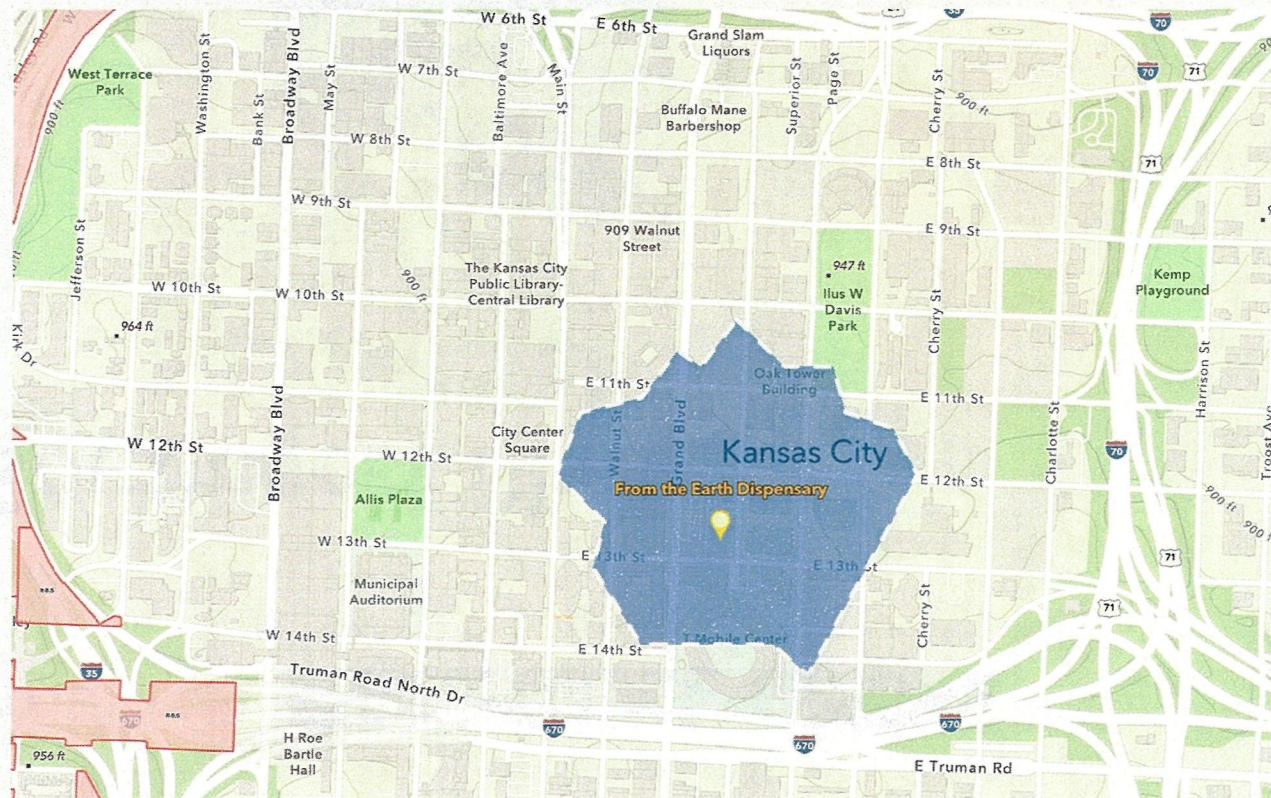
- 22 licensed dispensaries
- 5 currently located >1,000 ft from an R zoning district
- Applicant's responsibility to demonstrate compliance with standards at time of application



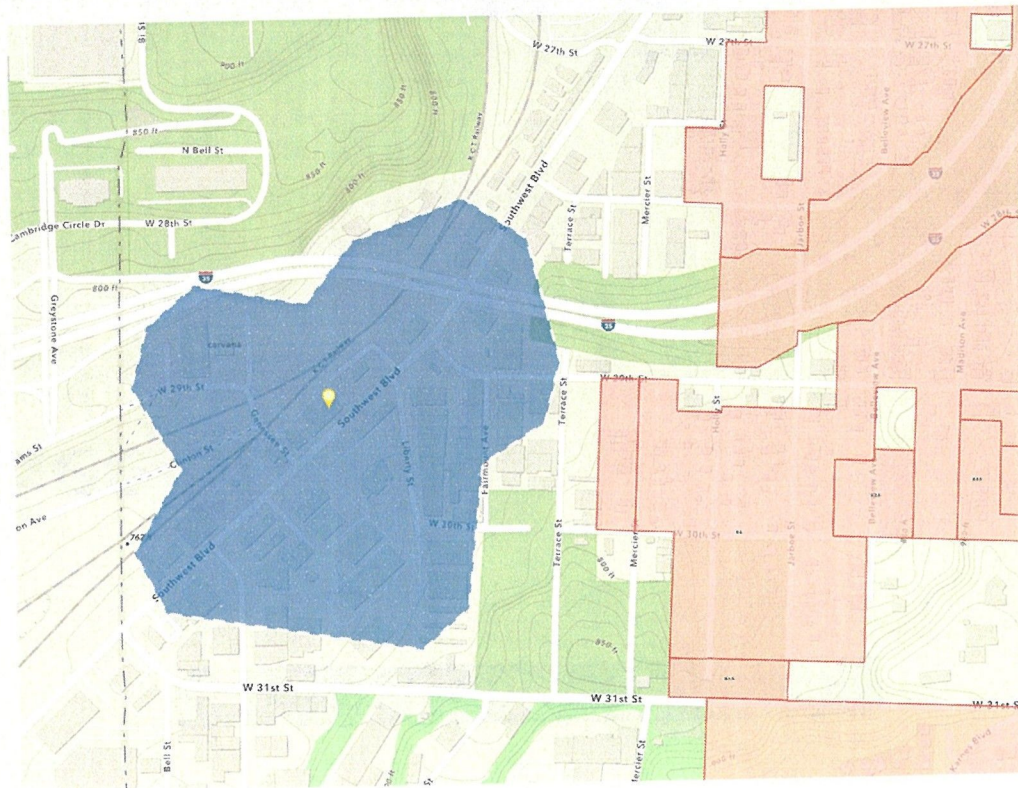
KANSAS CITY
MISSOURI

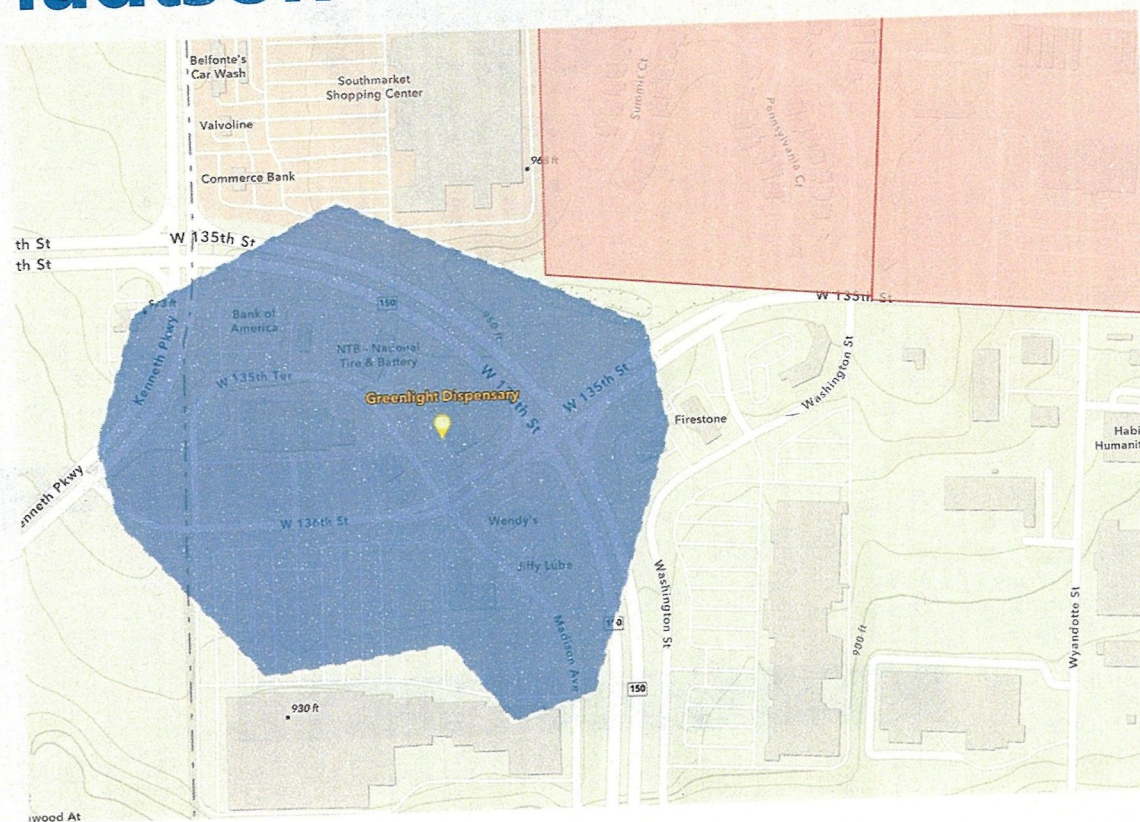
11

1222 McGee St



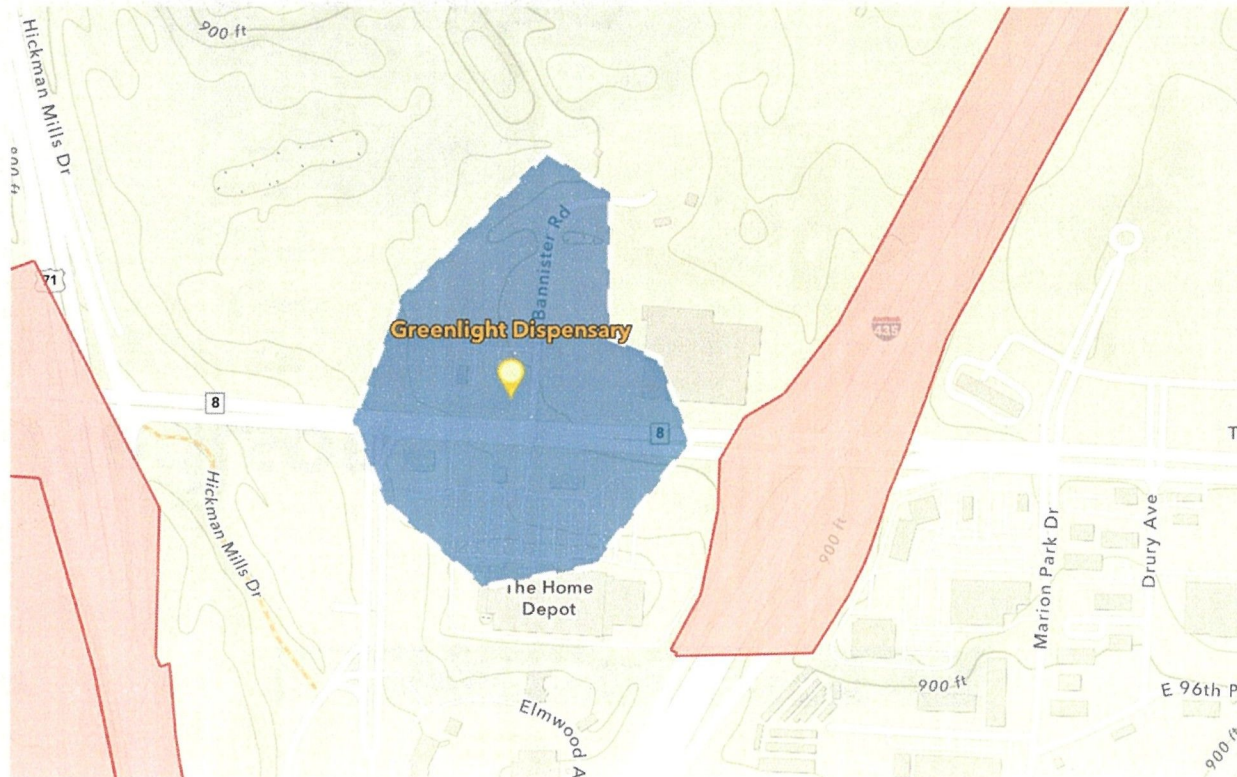
2918 Southwest Blvd







4900 E Bannister Rd



Recommendation

CPC: Approval, with revision

City Staff: Approval

