

NOTES:

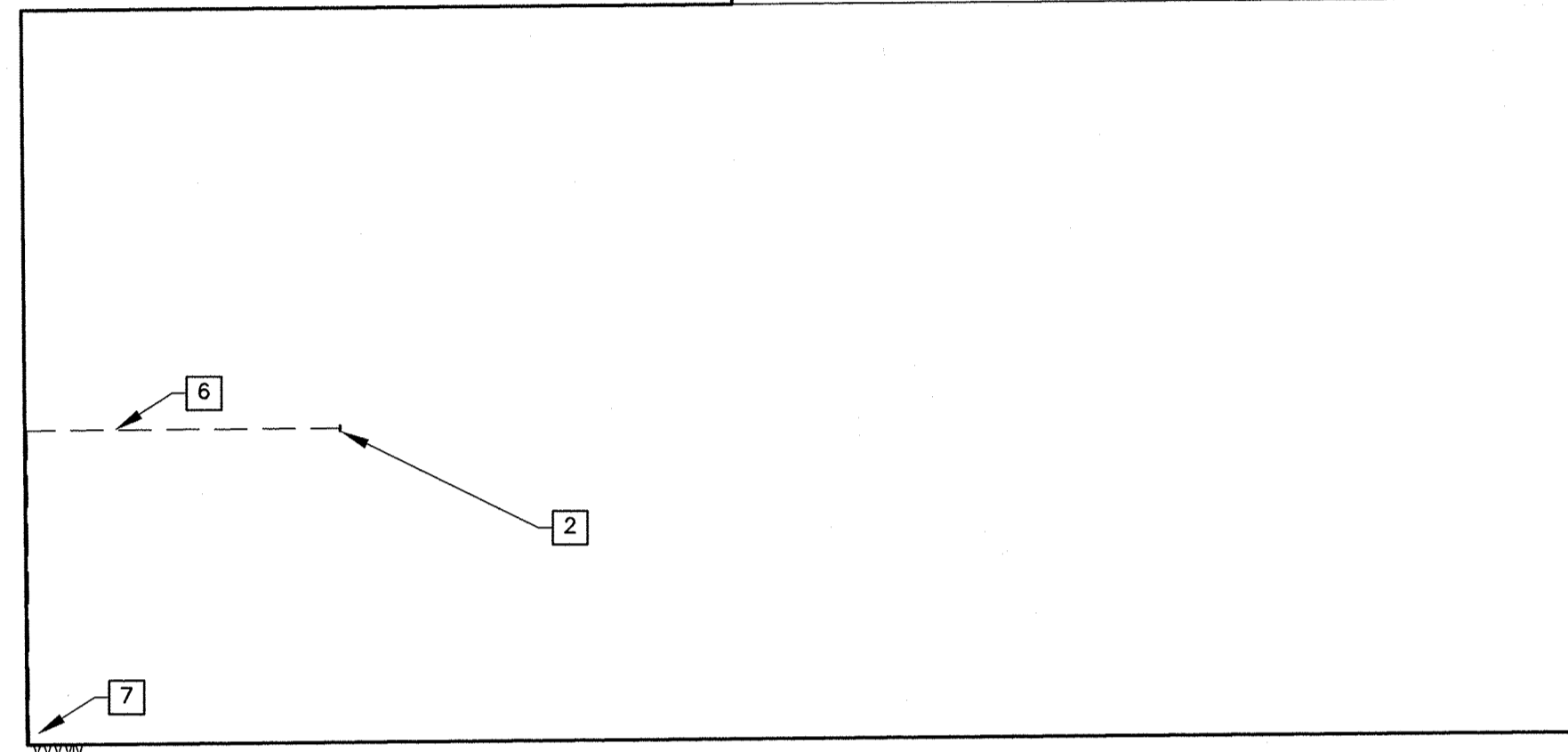
1. REFERENCE EXISTING AIRPORT LAYOUT PLAN DATED JULY, 2010.
2. REFERENCE AIRPORT SURFACE SURVEILLANCE CAPABILITY (ASSC) PROGRAM SITE ENGINEERING REPORT FOR KANSAS CITY INTERNATIONAL AIRPORT, DATED MAY 9, 2014.
3. REFERENCE SYSTEM INSTALLATION CONSTRAINTS DOCUMENT FOR THE AIRPORT SURFACE SURVEILLANCE CAPABILITY (ASSC) PROGRAM, DATED NOVEMBER 27, 2012.

CONSTRUCTION NOTES:

1. COORDINATE ALL CONSTRUCTION WITH OVERHAUL BASE FACILITY P.O.C.: JIM VITATOE, KCI OVERHAUL BASE (816) 210-3566.
2. SEE KEYED NOTES FOR INSTALLATION DETAILS.



1 RU # 5 POWER PLAN
1" = 60'



KEYED NOTES #

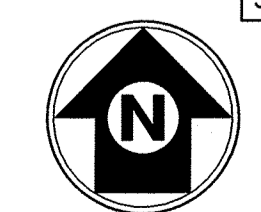
- 1 RAIL MAST. SEE DWGS. C021 AND C022.
- 2 POWER PANEL SP-27.
- 3 RU SITE LOCATION. COORDINATE LAYOUT WITH SIGNATURE P.O.C.
- 4 RAIL MAST H-FRAME. SEE DRAWING E505.
- 5 SEE CIVIL DRAWINGS FOR ADDITIONAL SITE PLAN DETAILS.
- 6 POWER ROUTED ON INTERIOR OF FACILITY BETWEEN POWER PANEL SP-27 AND RU DISCONNECT SWITCH LOCATED ON H-FRAME.
- 7 BUILDING STEEL LOCATION.
- 8 BARRICADE. SEE C006.

CONTRACTOR IS TO PERFORM ALL WORK SHOWN ON THIS DRAWING.

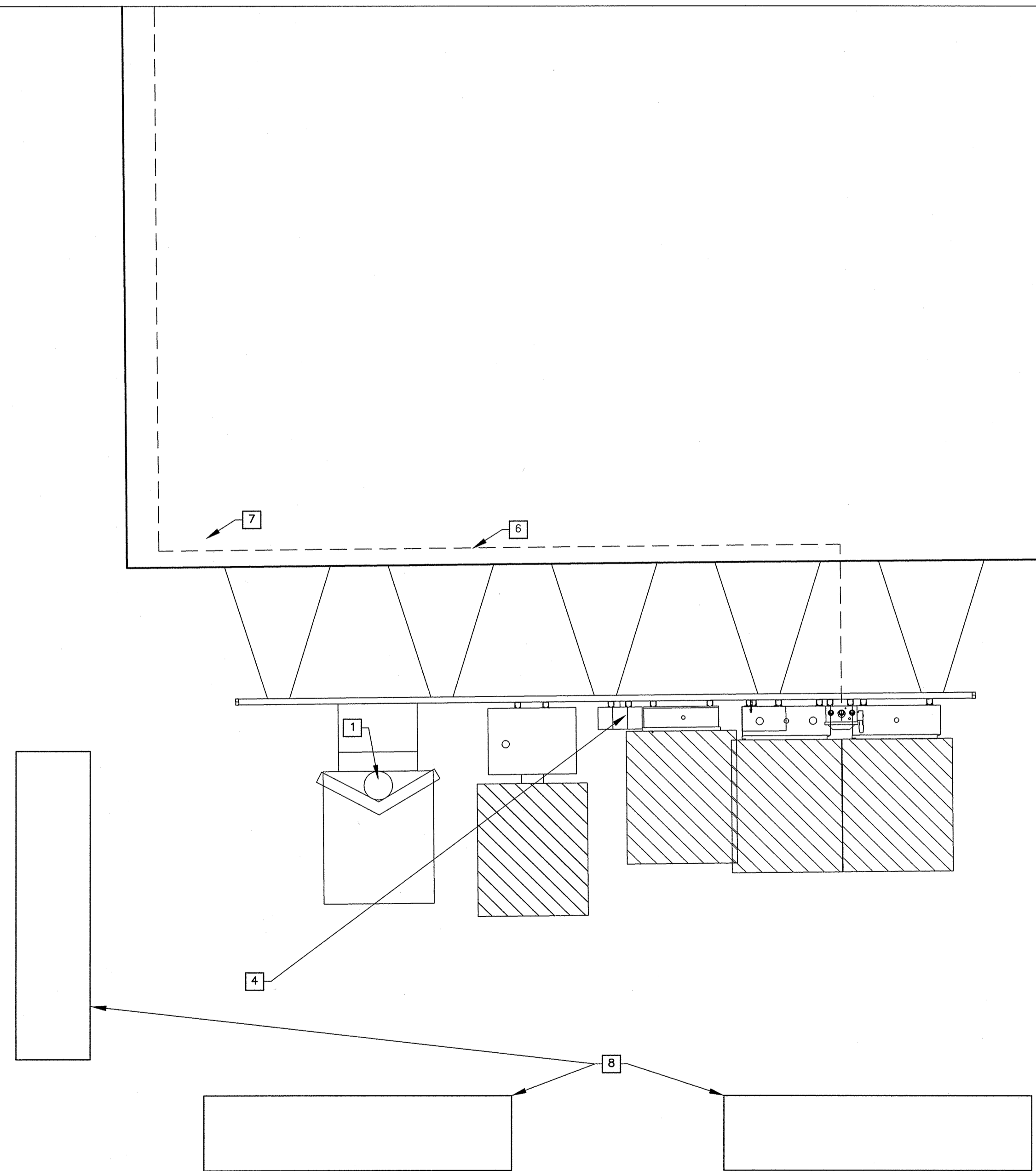
REV	APPROVED DATE	DESCRIPTION	JCN	REDLINE DATE	APVD
1	09/18/2015	ESTAB AIRPORT SURFACE SURVEILLANCE CAP	1103381		DDM
DEPARTMENT OF TRANSPORTATION FEDERAL AVIATION ADMINISTRATION ATO - TECHNICAL OPERATIONS CENTRAL SERVICE AREA ASSC REMOTE UNIT #5 ELECTRICAL SITE LAYOUT					
KANSAS CITY		KCI INTERNATIONAL AIRPORT		MO	
REVIEWED BY	SUBMITTED BY	APPROVED BY			
	DAVID MURPHY	JOHNNIE L. WHITE			
DESIGNED	DRAWN	ISSUED BY	DATE	JCN	NO.
		ENGINEERING SERVICES INFRASTRUCTURE	09/18/2015		1103381
CHECKED		DRAWING NO.	REV		
		MCI-D-ASSC-E006			A



3 ALP
1" = 5285'



2 RU # 5 SITE PLAN
1/4" = 1'
SCALE: 1/4" = 1'-0"



DTFACN-17-L-00047
 Exhibit "B"

Tom CTR Frank
 09/18/2015 09:41 AM
 09/18/2015 09:41 AM