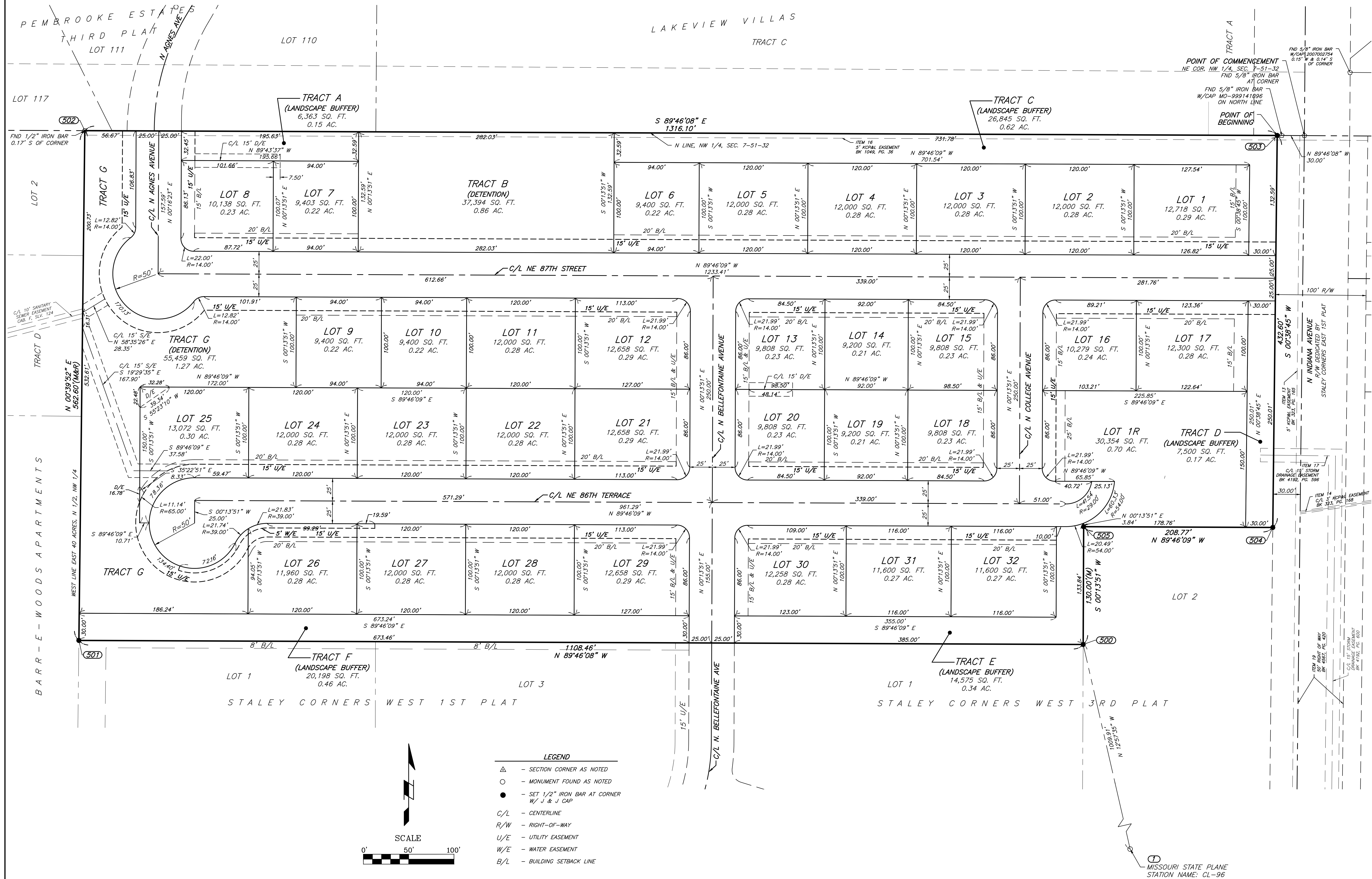
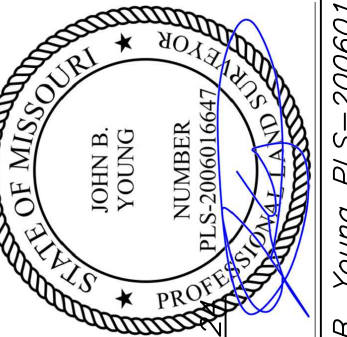


FINAL PLAT
STALEY CORNERS WEST 4TH PLAT
NW 1/4, SECTION 7, TOWNSHIP 51 NORTH, RANGE 32 WEST
KANSAS CITY, CLAY COUNTY, MISSOURI

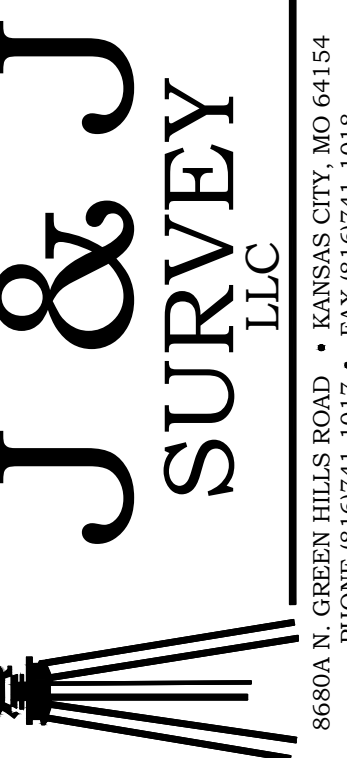


CERTIFICATION:
I hereby certify, that this drawing is based on an actual field survey made by me or under my direct supervision on the 21st day of March, 2024, and that said survey meets or exceeds the current Missouri Standards for Property Boundary Surveys, as established by the Missouri Board for Architects, Professional Engineers and Land Surveyors, and the Missouri Department of Natural Resources, Division of Geology and Land Survey.



Author's address: Young, J.S. 200007697

Location: S:\24.085 - Staley West 4th Plat REV\24.085-FPLAT.dwg-Jun 27, 2024-4:39pm



PHONE (818)/41-1017 • FAX (818)/41-1018

[illegible]